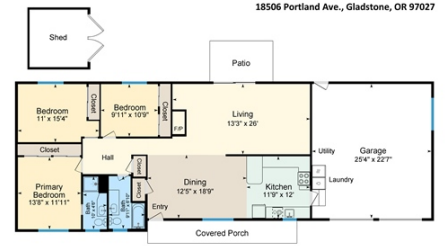


Gladstone Ranch



\$ 482,400



Main 1,531 Sq Ft (Measured from Exterior)
Sketch Prepared for Named Client Only
Property Measured on 10/20/24
Order floor plan services at www.AQualityMeasurement.com



18506 PORTLAND AVE, Gladstone, OR 97027

- » Beds: 3 | Baths: 2 Full
- » MLS #: 24526046
- » Single Family | 1,531 ft² | Lot: 10,019 ft²
- » Vaulted Ceilings Everywhere
- » More Info: GladstoneRanch.com



Sally Mehalovich
Sue Maag
(503) 781-7575 (Mobile)
sally.realestate@live.com
<https://smehalovich.remax.com/>



RE/MAX Advantage Group
13220 SE 172nd Ave
Suite #172
Happy Valley, OR 97086
(503) 855-3298



SURPRISE!
Mid-Century Vibe with 70s Flair!

Every spacious room features vaulted ceilings—even the bedrooms. The huge open-beam living space flows between the kitchen, dining and living rooms with great natural light. This is not your basic floor plan.

Wide hallways lead to the bright and airy primary suite with double closets and an attached bathroom with a walk-in shower. The two additional bedrooms are also large and bright with easy access to the second full bathroom. You'll appreciate the practical features: forced-air gas furnace, oversized 2-car garage, newer metal roof and easy-care laminate floors throughout.

